

5 GAL. (20 LITER) STAINLESS STEEL (ASME) PRESSURE POT

AirPro™ Air Spray Package

308455M
EN

Fine-finish spray package for waterborne and solvent-based fluids. For professional use only.

*100 psi (0.7 MPa, 7.0 bar) Maximum Fluid Working Pressure
100 psi (0.7 MPa, 7.0 bar) Maximum Air Input Pressure*

Model 237409, Series B

Complete package includes pressure pot,
AirPro air spray gun with 0.055 (1.4 mm) fluid nozzle
25 ft. (7.6 m) air and fluid hoses, and air and fluid controls.

Model 237413, Series A

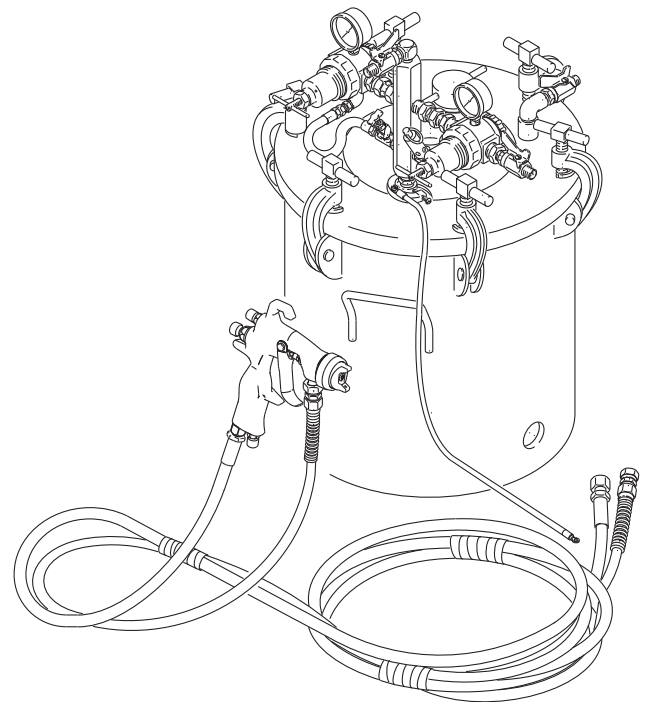
Complete package includes pressure pot,
AirPro HVLP spray gun with 0.055 (1.4 mm) fluid nozzle
25 ft. (7.6 m) air and fluid hoses, and air and fluid controls.



Important Safety Instructions

Read all warnings and instructions in this manual, and on the unit, including the power cord. Save these instructions.

This manual provides basic safety, installation and operation information for the package. For your safety, also read the component manuals supplied with this package before operating it.



ti0751b



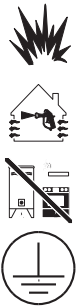
Model 237409 shown

Table of Contents





| | |
|---|-----------|
| Warnings | 3 |
| Setup | 5 |
| Prepare the operator | 5 |
| Prepare the site | 5 |
| Component Identification | 6 |
| Unpack the system | 7 |
| Connect the hose set and gun to the system ... | 7 |
| Ground the system | 7 |
| System Component Information | 8 |
| How to use the AirPro gun | 8 |
| How to adjust the air regulators | 9 |
| Safety relief valve | 9 |
| Operation | 10 |
| Pressure Relief Procedure | 10 |
| Flush the pressure pot before the first use ... | 11 |
| Prime the system | 11 |
| Set the fluid and air pressure | 11 |
| System Shutdown | 12 |
| Flushing | 12 |
| Parts | 14 |
| Model 237409, Series B | 14 |
| Model 237413, Series A | 16 |
| Technical Data | 18 |
| Notes | 19 |
| Graco Standard Warranty | 20 |

Warnings

The following warnings are for the setup, use, grounding, maintenance, and repair of this equipment. The exclamation point symbol alerts you to a general warning and the hazard symbols refer to procedure-specific risks. When these symbols appear in the body of this manual or on warning labels, refer back to these Warnings. Product-specific hazard symbols and warnings not covered in this section may appear throughout the body of this manual where applicable.

|  WARNING | |
|--|---|
|  | <p>PRESSURIZED EQUIPMENT HAZARD</p> <p>Fluid from the equipment, leaks, or ruptured components can splash in the eyes or on skin and cause serious injury.</p> <ul style="list-style-type: none"> • Follow the Pressure Relief Procedure when you stop spraying/dispensing and before cleaning, checking, or servicing equipment. • Tighten all fluid connections before operating the equipment. • Check hoses, tubes, and couplings daily. Replace worn or damaged parts immediately. • Handle and route hoses and tubes carefully. Keep the hoses and tubes away from moving parts and hot surfaces. Do not use the hoses to pull equipment. Do not expose Graco hoses to temperatures above 180°F (82°C) or below -40°F (-40°C). |
|  | <p>FIRE AND EXPLOSION HAZARD</p> <p>Flammable fumes, such as solvent and paint fumes, in work area can ignite or explode. To help prevent fire and explosion:</p> <ul style="list-style-type: none"> • Use equipment only in well ventilated area. • Eliminate all ignition sources; such as pilot lights, cigarettes, portable electric lamps, and plastic drop cloths (potential static arc). • Keep work area free of debris, including solvent, rags and gasoline. • Do not plug or unplug power cords, or turn power or light switches on or off when flammable fumes are present. • Ground all equipment in the work area. See Grounding instructions. • Use only grounded hoses. • Hold gun firmly to side of grounded pail when triggering into pail. Do not use pail liners unless they are antistatic or conductive. • Stop operation immediately if static sparking occurs or you feel a shock. Do not use equipment until you identify and correct the problem. • Keep a working fire extinguisher in the work area. |

! WARNING

| | |
|---|--|
|   | <p>EQUIPMENT MISUSE HAZARD</p> <p>Misuse can cause death or serious injury.</p> <ul style="list-style-type: none"> • Do not operate the unit when fatigued or under the influence of drugs or alcohol. • Do not exceed the maximum working pressure or temperature rating of the lowest rated system component. See Technical Data in all equipment manuals. • Use fluids and solvents that are compatible with equipment wetted parts. See Technical Data in all equipment manuals. Read fluid and solvent manufacturer's warnings. For complete information about your material, request MSDS from distributor or retailer. • Do not leave the work area while equipment is energized or under pressure. • Turn off all equipment and follow the Pressure Relief Procedure when equipment is not in use. • Check equipment daily. Repair or replace worn or damaged parts immediately with genuine manufacturer's replacement parts only. • Do not alter or modify equipment. Alterations or modifications may void agency approvals and create safety hazards. • Make sure all equipment is rated and approved for the environment in which you are using it. • Use equipment only for its intended purpose. Call your distributor for information. • Route hoses and cables away from traffic areas, sharp edges, moving parts, and hot surfaces. • Do not kink or over bend hoses or use hoses to pull equipment. • Do not expose Graco hoses to temperatures above 180°F (82°C) or below -40°F (-40°C). • Keep children and animals away from work area. • Comply with all applicable safety regulations. |
|  | <p>TOXIC FLUID OR FUMES HAZARD</p> <p>Toxic fluids or fumes can cause serious injury or death if splashed in the eyes or on skin, inhaled, or swallowed.</p> <ul style="list-style-type: none"> • Read MSDSs to know the specific hazards of the fluids you are using. • Store hazardous fluid in approved containers, and dispose of it according to applicable guidelines. |
|  | <p>PERSONAL PROTECTIVE EQUIPMENT</p> <p>Wear appropriate protective equipment when in the work area to help prevent serious injury, including eye injury, hearing loss, inhalation of toxic fumes, and burns. This protective equipment includes but is not limited to:</p> <ul style="list-style-type: none"> • Protective eyewear, and hearing protection. • Respirators, protective clothing, and gloves as recommended by the fluid and solvent manufacturer |

Setup

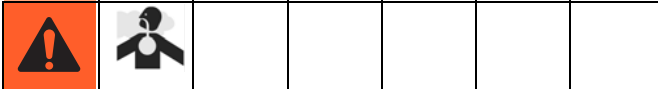
NOTICE

This equipment is compatible with most water-based materials. See the wetted parts in the **Technical Data** section and your fluid and solvent manufacturer's compatibility information.

Prepare the operator

All persons who operate the system should be trained in the safe, efficient operation of all system components as well as the proper handling of the chemical coating. At a minimum, all operators should thoroughly read the safety, installation and operation sections of this manual and the component manuals.

Prepare the site



To prevent hazardous concentrations of toxic and/or flammable vapors, spray only in a properly ventilated spray booth. **Never operate the spray gun unless ventilation fans are operating.** Check and follow all of the national, state and local codes regarding air exhaust velocity requirements.

1. Use a minimum 5 HP (3.7 kW) air compressor for efficient operation.
2. Clear obstacles and debris that could cause an unsafe operating environment.
3. Bring an air line from your compressed air supply to the pressure pot location. Be sure the air is dry and filtered. Install a bleed-type master air valve upstream from the pressure pot. When it is closed and the pressure pot air regulator (33) is opened, the bleed-type master air valve relieves all air pressure to the equipment components.
4. Ventilate the spray booth.

Component Identification

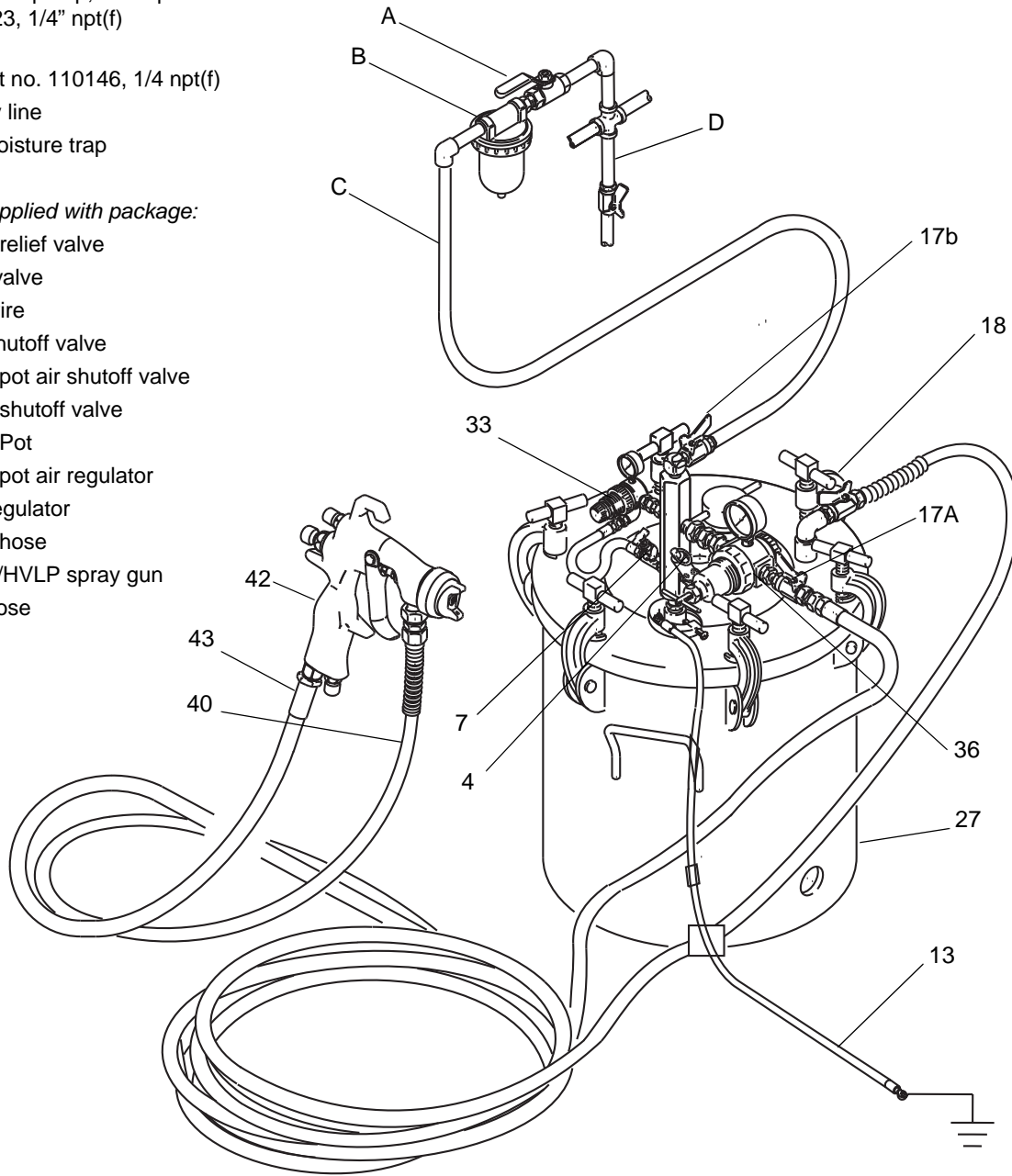
KEY

Components you must supply:

- A Bleed-type master air valve
Required for pump; order part no. 110223, 1/4" npt(f)
- B Air filter.
Order part no. 110146, 1/4 npt(f)
- C Air supply line
- D Air line moisture trap

Components supplied with package:

- 4 Pressure relief valve
- 7 Air relief valve
- 13 Ground wire
- 17a Gun air shutoff valve
- 17b Pressure pot air shutoff valve
- 18 Gun fluid shutoff valve
- 27 Pressure Pot
- 33 Pressure pot air regulator
- 36 Gun air regulator
- 40 Gun fluid hose
- 42 AirPro air/HVLP spray gun
- 43 Gun air hose



Model 237413 shown

ti0750b

FIG. 1

Unpack the system

1. In addition to the assembled unit, these components are packed loosely or separately: hose set, gun, instruction manuals. These are the manuals you should receive:




308369 Pressure pot
 308167 Air regulator
 312414 HVLP spray gun (Model 237413)
 312414 Air spray gun (Model 237409)

Connect the hose set and gun to the system

See FIG. 1 on page 6

1. Connect the air hose (43) between the gun air shut-off valve (17a) and the air inlet of the spray gun. These are 1/4- 18 npsm swivel fittings.
2. Connect the fluid hose (40) between the fluid shutoff valve (18) and the fluid inlet of the spray gun. These are 3/8- 18 npsm swivel fittings.
3. Verify that all fittings throughout the system are tightened securely.

Ground the system

| | | | | | | |
|--|--|---|--|--|--|--|
|  |  |  | | | | |
| <p>The equipment must be grounded to reduce the risk of static sparking. Static sparking can cause fumes to ignite or explode. Grounding provides an escape wire for the electric current. Check your local electrical code for detailed grounding instructions for your area and type of equipment.</p> | | | | | | |

Ground all of this equipment:

Pressure pot: One end of the ground wire (13) is already connected to the pressure pot. Connect the other end of the ground wire to a true earth ground.

Air compressor: Ground according to manufacturer's recommendations.

Object being sprayed: Ground according to local code.

Fluid supply container: Ground according to local code.

All solvent pails used when flushing: Ground according to local code. Use only metal pails, which are conductive. Do not place the pail on a non-conductive surface, such as paper or cardboard, which interrupts the grounding continuity.

System Component Information

How to use the AirPro gun

See FIG. 2

1. Make all fluid and air adjustments at the pressure pot for maximum efficiency. See **How to adjust the air regulators**, page 9.

NOTE: Monitor the adjustments made to the gun so if the results are not satisfactory it can easily be returned to its previous adjustment. Refer to your gun manual for more information.

2. **Adjusting Air Spray Gun:** Use the fan pattern adjusting valve (E). Normal adjustment is with the valve turned out fully clockwise and then turned in two full turns.

- Turn *counterclockwise* to widen spray pattern.
- Turn *clockwise* to narrow spray pattern.

Adjusting HVLP Spray Gun: Use the fan pattern adjusting valve (E).

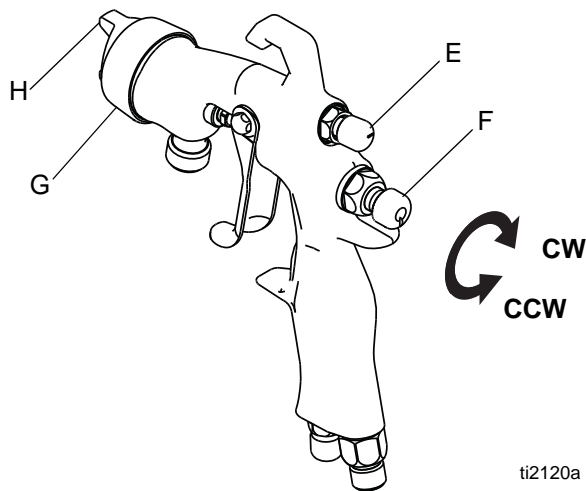
- For a round spray pattern, turn the pattern adjusting valve fully in (*clockwise*).
- For an oval (flat) spray pattern, turn the pattern adjusting valve fully out (*counterclockwise*).

3. The fluid adjusting valve (F) is used in systems that do not have a fluid regulator. As this package includes a pressure pot regulator (33), use it to adjust fluid flow. Turn the valve (F) out until full trigger travel is obtained.

4. The gun has a built-in lead and lag operation. When triggered, the gun emits air before the fluid is discharged. When the trigger is released, the fluid stops before the air flow stops. This helps assure the spray is atomized and prevents fluid buildup on the air cap.

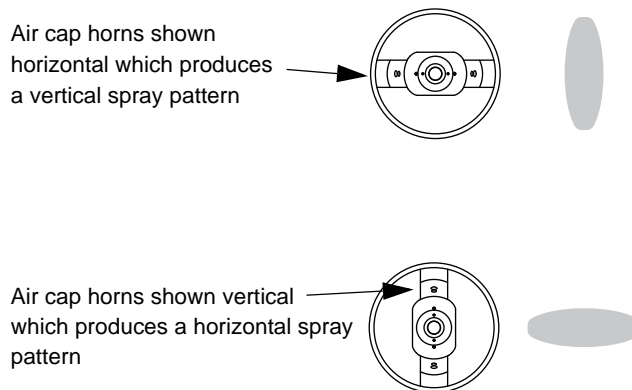
5. Loosen the air cap retaining ring (G) and rotate the horns (H) of the air cap to obtain the desired spray position. Tighten the retaining ring snugly, but do not over tighten it. See FIG. 2 and FIG. 3.

6. Clean and lubricate the gun as instructed in your separate gun manual.



ti2120a

FIG. 2



ti2122a

FIG. 3

How to adjust the air regulators

See FIG. 4

1. Always open air regulators slowly to prevent surging during startup.
2. As you look at the system, the regulator (36) on the right controls air to the gun and the regulator (33) on the left controls air to the pressure pot.
3. Model 237409 has two T-handle air regulators (33 and 36). Model 237413 (shown in FIG. 4) has one T-handle air regulator (36) and one air regulator with an adjustment knob (33).

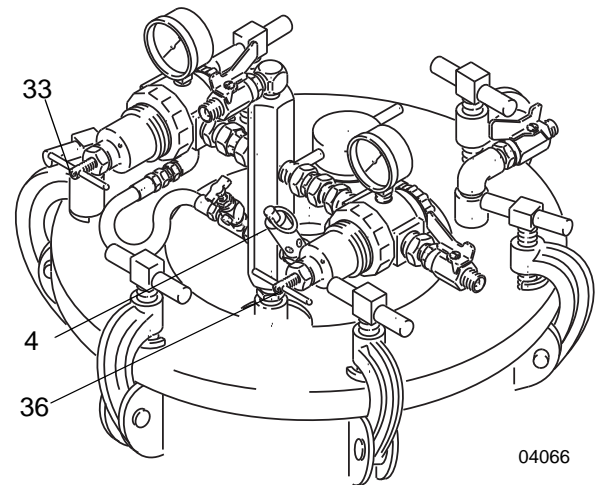
T-Handle Air Regulator

Turn the T-handle (36 and 33- Model 237409 only) in (clockwise) to open the air regulator. Turn the T-handle fully out (counterclockwise) to close it. Be sure the jam nut under the T-handle does not interfere with your adjustments. Tighten the jam nut to lock in the setting, if desired.

Air Regulator with Adjustment Knob

Model 237413 only

Pull out the adjustment knob (33), and turn the knob in (clockwise) to open the air regulator; turn the knob fully out (counterclockwise) to close it. Push the adjusting knob in to lock the setting if desired.



Model 237413 shown

FIG. 4

Safety relief valve

See FIG. 4.

The safety relief valve (4) automatically relieves the pressure pot pressure when the air pressure exceeds approximately 100 psi (0.7 MPa, 7.0 bar). It resets automatically when the pressure is relieved. Refer to the test procedure in manual 308369.

Operation

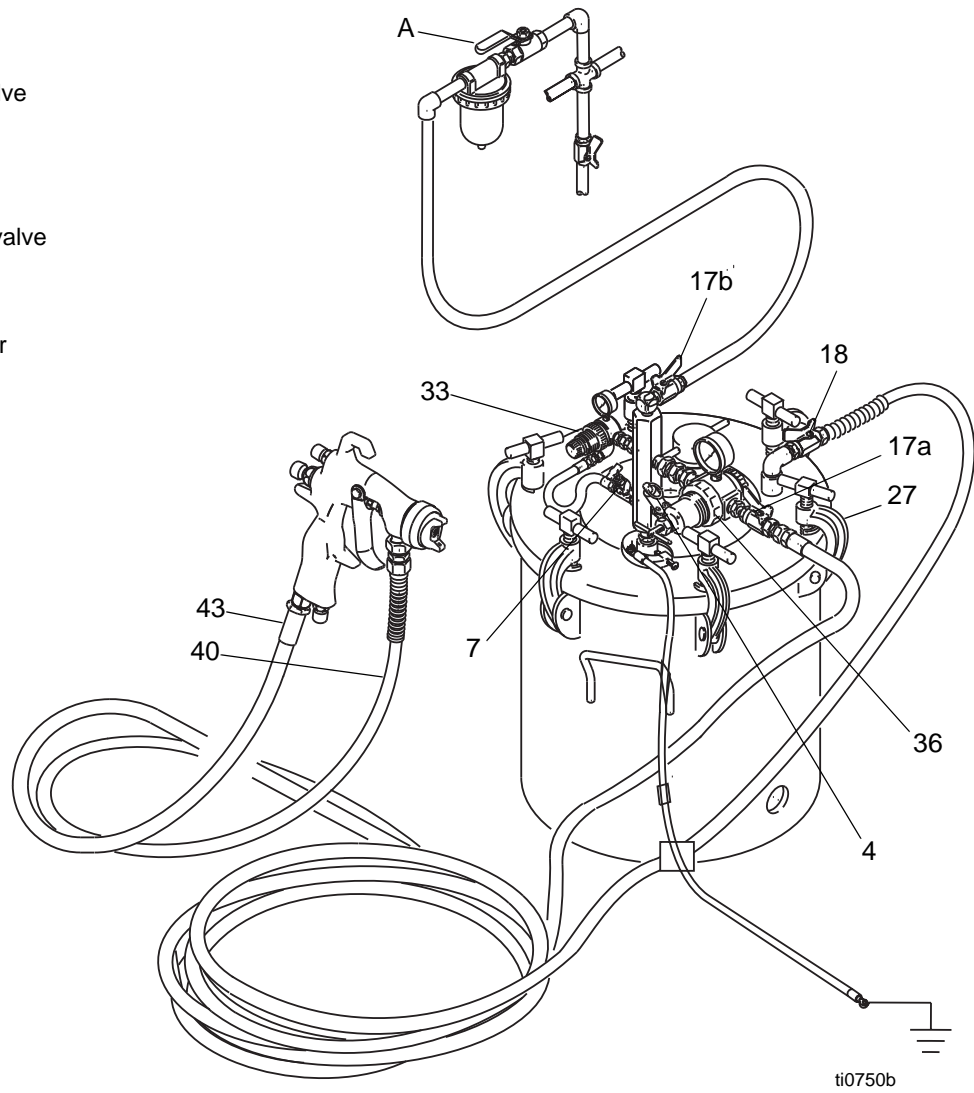
Pressure Relief Procedure

| | | | | | | |
|--|--|--|--|--|--|--|
| | | | | | | |
| <p>This equipment stays pressurized until pressure is manually relieved. To help prevent serious injury from pressurized fluid, such as skin injection, splashing fluid and moving parts, follow the Pressure Relief Procedure when you stop spraying and before cleaning, checking, or servicing the equipment.</p> | | | | | | |

2. Open the air relief valve (7) by turning it counter clockwise. Leave it open until you reinstall the pressure pot cover (torque c-clamp to 8-10 ft-lbs) or fill port.
3. Wait until there is no air escaping through the drain cock fitting before removing the pressure pot cover or opening the fill port.

1. Close the gun air shutoff valve (17a). See FIG. 5.

- A Bleed-type master air valve
- 4 Pressure relief valve
- 7 Air relief valve
- 17a Gun air shutoff valve
- 17b Pressure pot air shutoff valve
- 18 Gun fluid shutoff valve
- 27 C-clamps
- 33 Pressure pot air regulator
- 36 Gun air regulator
- 40 Gun fluid hose
- 43 Gun air hose



Model 237413 shown

ti0750b

FIG. 5

Flush the pressure pot before the first use

Flush with a solvent compatible to your fluid. Consult the fluid manufacturer's literature for recommendations. See **Flushing** on page 12.

Prime the system

1. Remove the pressure pot cover.
2. Place a 5 gal. (20 liter) metal pail of fluid in the pressure pot, or install the pressure pot liner (supplied) and fill it with up to 5 gal. (20 liter) of fluid.

NOTE: Order part no.15D059 for a package of 20 liners.

3. Tighten the c-clamp handles (27) securely.
4. Close the pressure pot and gun air regulators (33, 36).
5. Be sure the air relief valve (7) is closed (clockwise).
6. Be sure the pressure pot air shutoff valve (17b) is closed (valve handle at a right angle to the valve body), and then connect the air line (C) to the valve.
7. Open the master air valve (A).
8. Open the pressure pot air shutoff valve (17b).
9. Adjust the pressure pot air regulator (33) to 10 psi (69 kPa, 0.7 bar).
10. Open the fluid shutoff valve (18).
11. Hold the gun against and aimed into a grounded metal waste pail. Trigger the gun slowly. The gun will emit air until the fluid arrives. When fluid flows freely, release the gun trigger.

Set the fluid and air pressure

1. With the system primed and the gun air regulator air regulator closed (36), trigger the gun and adjust the pressure pot air regulator (33). Refer to FIG. 5. If available, use the pressure setting provided by your fluid supplier. Otherwise, use the following instructions to determine the fluid pressure.

To determine the fluid pressure setting, hold the gun parallel to the floor. (Be sure to catch the fluid in a container.) With the gun air pressure turned off, trigger the gun. Adjust the pressure pot regulator (33) until the straight fluid stream is within the range indicated for the viscosity of your fluid before it drops off. That is your optimal pressure pot air pressure. See FIG. 6 and FIG. 7.

NOTE: If you have the HVLP spray gun, do not exceed 15 psi (103 kPa, 1 bar) to maintain HVLP compliance.


Fluid Viscosity

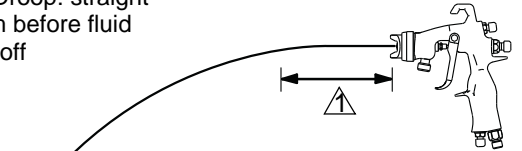
Measured with a #2 Zahn cup

Light (18-25 seconds)
Medium (25-40 seconds)
Heavy (40-60 seconds)

Fluid Droop

8-10" (200-250 mm)
6-8" (150-200 mm)
4-6" (100-150 mm)

 Fluid Droop: straight stream before fluid drops off



Air Spray Gun

ti12121a

FIG. 6


Fluid Viscosity

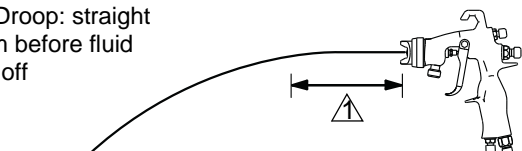
Measured with a #2 Zahn cup

Light (18-25 seconds)
Medium (25-40 seconds)
Heavy (40-60 seconds)

Fluid Droop

4-6" (100-150 mm)
2-4" (50-100 mm)
1-2" (25-50 mm)

 Fluid Droop: straight stream before fluid drops off



HVLP Spray Gun

ti12121a

FIG. 7

2. Release the gun trigger. Install the air cap.
3. Open the gun air shutoff valve (17a). Partially trigger the gun so only air is emitted. Set the gun air regulator (36) pressure as follows:
 - HVLP Gun - 60 psi (414 kPa, 4.1 bar)
 - Air Spray Gun - 65 to 90 psi (448 kPa, 4.5 bar).

- Open the fan pattern adjusting valve (E) by turning it fully counterclockwise, then turn it in 1 to 2 turns. See FIG. 8.

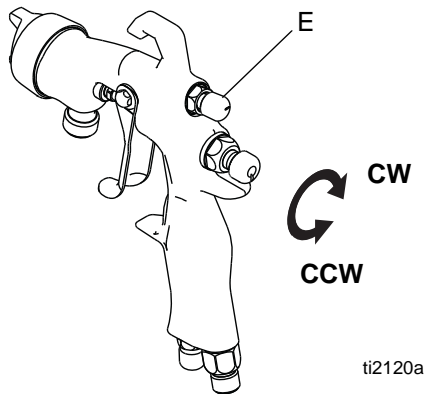


FIG. 8

- Spray a stationary test pattern on scrap paper. Hold the gun 10 to 12 in. (250-300 mm) from the paper and spray for 2 or 3 seconds. If the spray pattern is poorly atomized, the air and/or fluid pressures may need adjustment.

If the spray pattern atomization is not fine enough, increase the gun air pressure. If the spray pattern atomization is too fine, decrease the gun air pressure. If the atomization is still not good enough, try lowering the fluid pressure in increments of 2 or 3 psi (14 or 21 kPa, 0.1 or 0.2 bar) to achieve the desired finish quality.

NOTE: For the most efficient paint usage, use the lowest air pressure needed to obtain a good finish. Higher air pressures create more overspray and uses more fluid.

NOTICE

When using catalyzed materials, observe the fluid pot life as recommended by the fluid manufacturer. Always flush the system before the pot life has expired to prevent dried fluid which may be difficult to clean out and may damage the system.

System Shutdown

Shut down the system at the end of the work shift and before checking, adjusting, cleaning or repairing the system. Always follow the **Pressure Relief Procedure**, on page 10.

Flushing

When to flush

- Before the first time use
- When changing colors
- Before fluid can dry or settle out in a dormant system (observe the recommended fluid pot life on catalyzed fluids)
- Before storing the system

How to flush

See FIG. 9.

- Relieve pressure.
- Remove the air cap before flushing. Clean it separately.
- Remove the pressure pot cover. Remove the tank liner, if used. Pour in 1 gal. (4 liter) or place a 1 gal. (4 liter) metal pail of compatible solvent in the pressure pot. Install the cover and tighten the c-clamp handles (27) to 8-10 ft-lbs.
- Make sure the pressure pot and gun air regulators (33, 36) and the master air valve (A) is closed.
- Be sure the air relief valve (7) is closed (clockwise).
- Open the master air valve (A).
- Open the pressure pot air shutoff valve (17b).
- Set the pressure pot air regulator to 20 psi (138 kPa, 1.4 bar).
- Open the gun fluid shutoff valve (18).
- Hold the gun against and aimed into grounded metal waste pail. Trigger the gun slowly. When fluid flows freely, release the gun trigger.
- For a first-time flush:** trigger the gun and flush with solvent for 30 seconds.

For flushing after spraying fluid: trigger the gun and flush with solvent until the system is thoroughly cleaned. Repeat with clean solvent, if necessary.

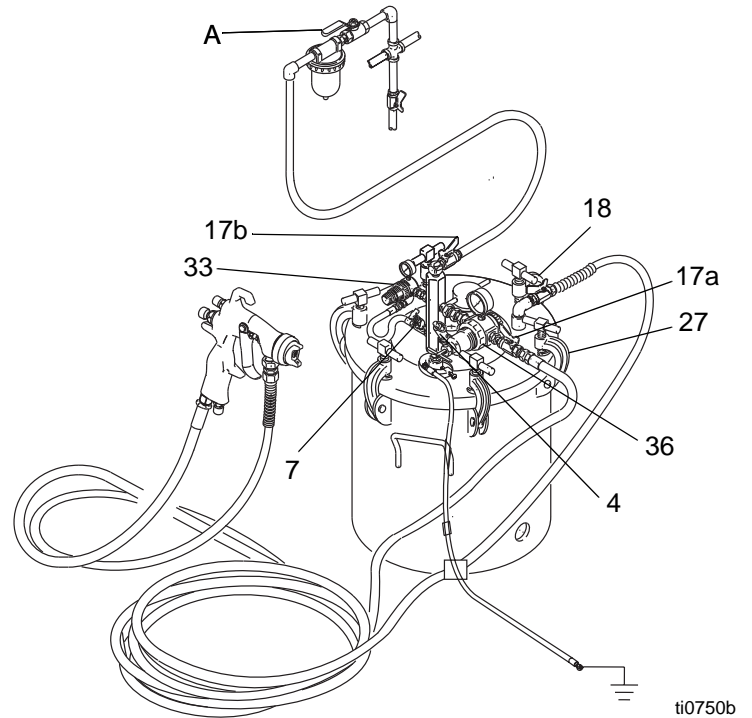
- Release the gun trigger, close the pressure pot air shutoff valve (17b).
- Relieve pressure.

14. Open the tank and clean the inside of the tank and its suction tube.

15. You are now ready to prime the system with another fluid or to store the system. Relieve pressure if you are storing the system.

KEY

- A Bleed-type master air valve
- 4 Pressure relief valve
- 7 Air relief valve
- 17a Gun air shutoff valve
- 17b Pressure pot air shutoff valve
- 18 Gun fluid shutoff valve
- 27 C-clamps
- 33 Pressure pot air regulator
- 36 Gun air regulator



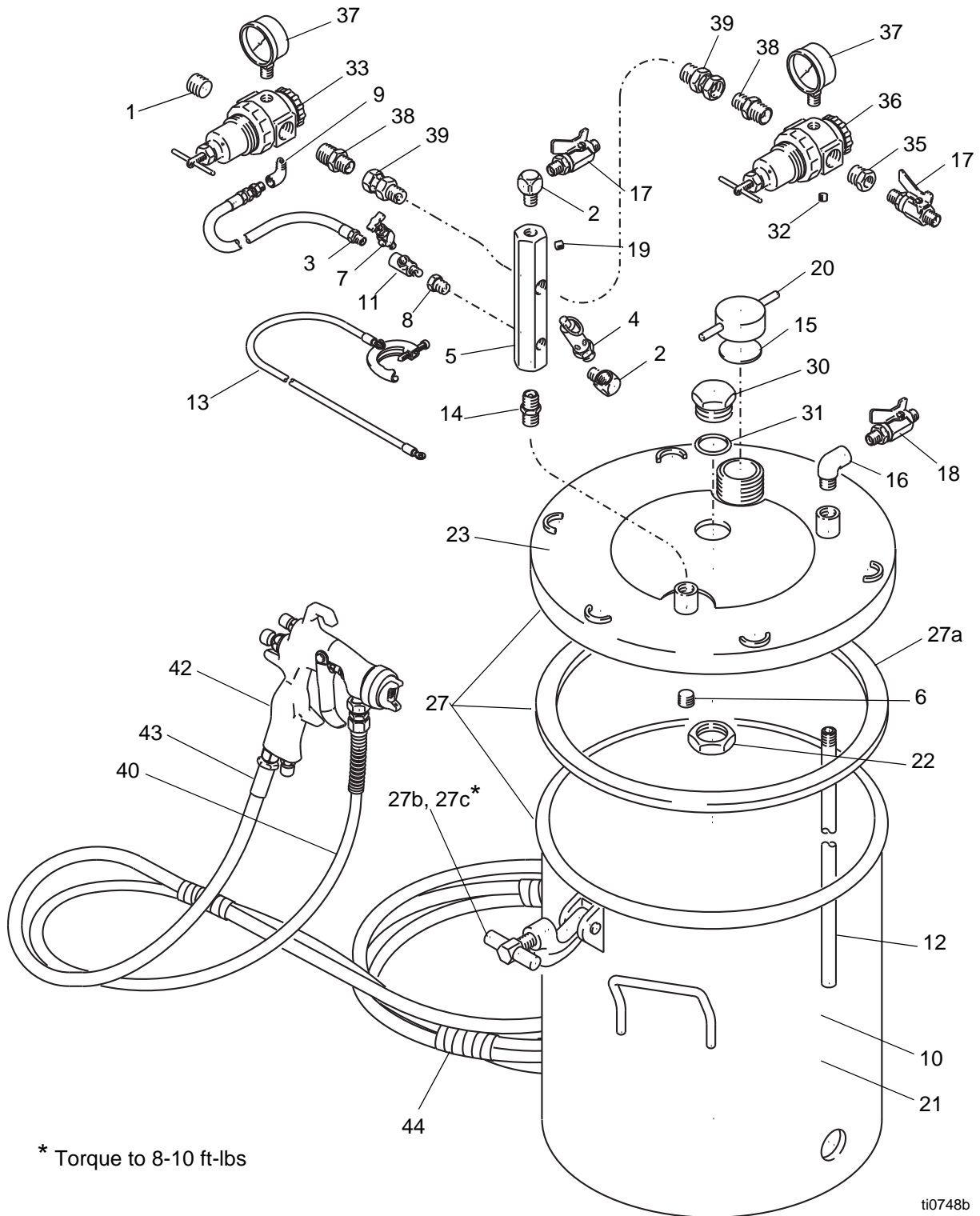
Model 237413 shown

FIG. 9

Parts

Model 237409, Series B

Includes items 1 to 44



* Torque to 8-10 ft-lbs

ti0748b

237409 Series B - Parts List

| Ref. No. | Part No. | Description | Qty. | Ref. No. | Part No. | Description | Qty. |
|----------|----------|---|------|----------|----------|---|------|
| 1 | 100361 | PLUG | 1 | 27 | 236087 | PRESSURE POT, 5 gal (20 liter), Includes replaceable items 27a to 27c | |
| 2 | 100840 | ELBOW, street, 1/4-18 npt(m x f) | 2 | | | | |
| 3 | 164724 | HOSE, coupled, 1/8-27 npt(m) | 1 | 27a✓ | 117571 | GASKET, Santoprene® | 1 |
| 4 | 103347 | PRESSURE RELIEF VALVE, 100 psi (0.7 MPa, 7 bar), 1/4-18 npt(m) | 1 | 27b | 111381 | C- CLAMP KIT includes item 27c | 6 |
| 5 | 189016 | AIR INLET MANIFOLD, 3/8-18 npt x 1/4-18 npt | 1 | 27c✓ | 110143 | T-HANDLE | 6 |
| 6 | 112306 | PLUG, pipe, 3/8-18 npt | 1 | 30 | 188880 | PLUG, lid | 1 |
| 7 | 101759 | AIR RELIEF VALVE | 1 | 31✓ | 103414 | O-RING, packing, fluoroelastomer | 1 |
| 8 | 100030 | BUSHING, 1/8-27 npt(f x m) | 1 | 32 | 100721 | PLUG, pipe, 3/8-18 npt | 1 |
| 9 | 112538 | ELBOW | 1 | 33✓ | 104267 | AIR REGULATOR | 1 |
| 10 | 176347 | LABEL, identification | 1 | 35 | 100206 | BUSHING | 1 |
| 11 | 110475 | TEE, street, 1/8-27 npt(f x m) | 1 | 36 | 104267 | AIR REGULATOR | 1 |
| 12 | 171976 | TUBE, 5 gal. (20 liter) size, | 1 | 37 | 160430 | AIR PRESSURE GAUGE | 2 |
| 13 | 222011 | GROUND WIRE & CLAMP | 1 | 38 | 159239 | NIPPLE | 2 |
| 14 | 156849 | NIPPLE, pipe, 3/8-18 npt | 1 | 39 | 155665 | SWIVEL | 2 |
| 15✓ | 171988 | GASKET, chlororene rubber and cork | | 40 | 235339 | HOSE, fluid, nylon, cpld 3/8 npsm (fbe), 1/4" ID x 25'(6.3 mm ID x 7.6 m) | 1 |
| 16 | 110756 | ELBOW, street, 90°, 3/8 npt (mxf) | 1 | | | | |
| 17✓ | 208390 | BALL VALVE, 1/4-18 npt(m) See 307068 for parts | 2 | 42 | 288931 | AIR SPRAY GUN, conventional, AirPro; See manual 312414 | 1 |
| 18✓ | 237533 | BALL VALVE, 3/8-18 npsm(m x f), See 307068 for parts | 1 | 43 | 210867 | AIR HOSE, cpld 1/4 npsm(fbe), 5/16" ID x 25' (7.9 mm ID x 7.6 m) | 1 |
| 19 | 100139 | PLUG, pipe, headless, 1/8-27 npt | 1 | 44 | 103473 | WIRE TIE STRAP | 13 |
| 20 | 210575 | CAP, filler | 1 | | | | |
| 21▲ | 290044 | LABEL, identification | 1 | | | | |
| 22 | 188784 | NUT, jam, hex, 1-1/2-12-unf-2b, | 1 | | | | |
| 23▲ | 175078 | LABEL, Warning, not shown | 1 | | | | |
| 26 | 15D059 | PRESSURE POT LINERS, Package of 20, 5 gal. (20 liter) size, purchase separately | | | | | |

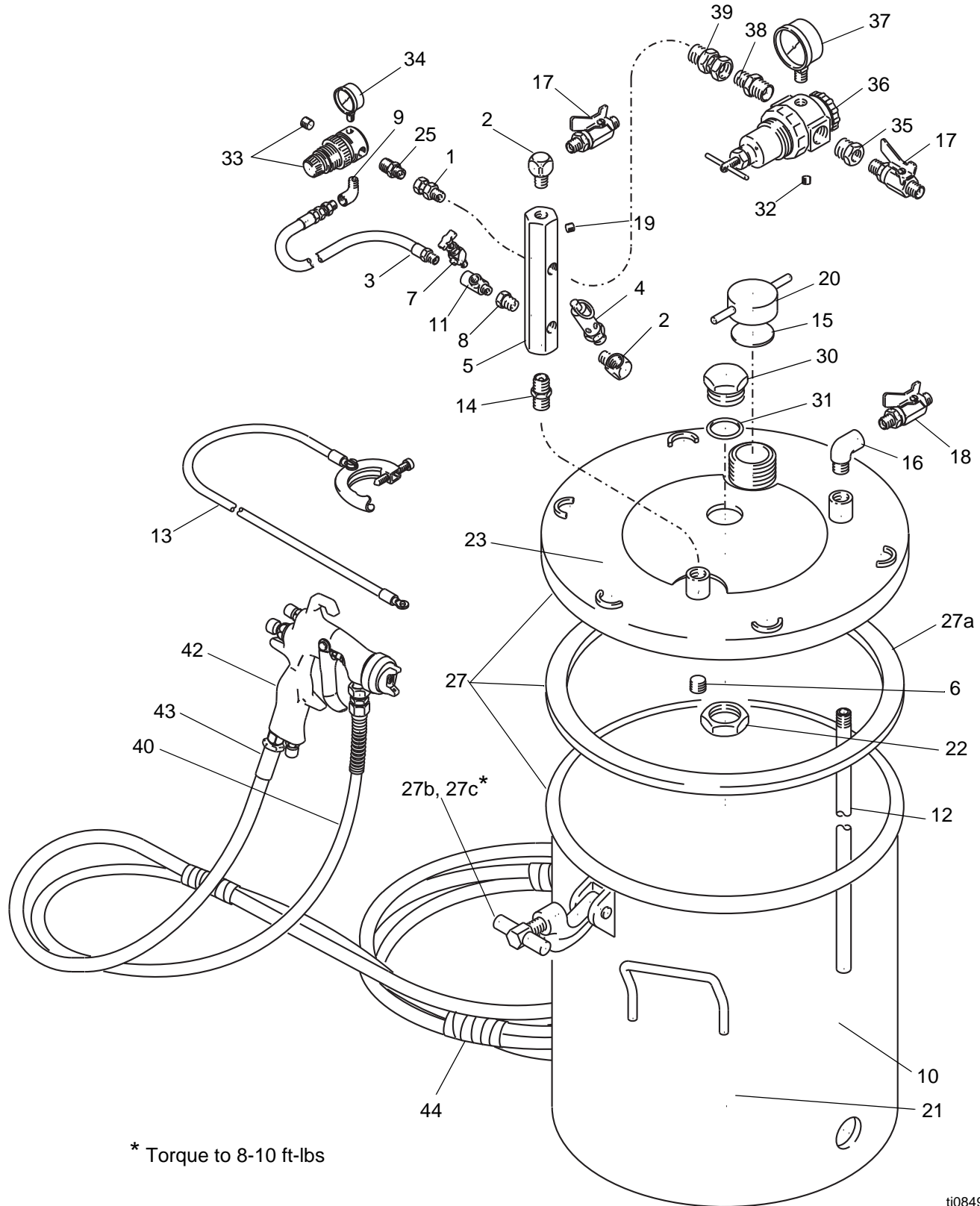
Use only **Genuine Graco Parts and Accessories.**

✓ Keep these spare parts on hand to reduce down time.

▲ Replacement Danger and Warning labels, tags and cards are available at no cost.

Model 237413, Series A

Includes items 1 to 44



* Torque to 8-10 ft-lbs

237413 Series A - Parts List

| Ref. No. | Part No. | Description | Qty. | Ref. No. | Part No. | Description | Qty. |
|----------|----------|---|------|--|---|--|------|
| 1 | 110476 | ADAPTER, union, straight swivel, 3/8 npt(m) to 1/4 npsm(f) | 1 | 27 | 236087 | PRESSURE POT, 5 gal (20 liter), Includes replaceable items 27a to 27c | 1 |
| 2 | 100840 | ELBOW, street, 1/4-18 npt(m x f) | 2 | 27a✓ | 117571 | GASKET, Santoprene® | 1 |
| 3 | 164724 | HOSE, coupled, 1/8-27 npt(m) | 1 | 27b | 111381 | C-CLAMP KIT includes item 27c | 6 |
| 4 | 103347 | PRESSURE RELIEF VALVE, 100 psi (0.7 MPa, 7 bar), 1/4-18 npt(m) | 1 | 27c✓ | 110143 | T-HANDLE | 6 |
| 5 | 189016 | AIR INLET MANIFOLD, 3/8-18 npt x 1/4-18 npt | 1 | 30 | 188880 | PLUG, lid | 1 |
| 6 | 112306 | PLUG, pipe, 3/8-18 npt | 1 | 31✓ | 103414 | O-RING, packing, fluoroelastomer | 1 |
| 7 | 101759 | AIR RELIEF VALVE | 1 | 32 | 100721 | PLUG, pipe, 3/8-18 npt | 1 |
| 8 | 100030 | BUSHING, 1/8-27 npt(f x m) | 1 | 33✓ | 111501 | AIR REGULATOR, 0-15 psi (0-103 kPa, 0-1 bar) | 1 |
| 9 | 112307 | ELBOW, street, 90°, 1/8-27 npt (f x m) | 1 | 34✓ | 110444 | AIR PRESSURE GAUGE 0-15 psi (0-103 kPa, 0-1 bar) | 1 |
| 10 | 176347 | LABEL, identification | 1 | 35 | 100206 | BUSHING | 1 |
| 11 | 110475 | TEE, street, 1/8-27 npt (f x m) | 1 | 36 | 104267 | AIR REGULATOR | 1 |
| 12 | 171976 | TUBE, 5 gal. (20 liter) size | 1 | 37 | 160430 | AIR PRESSURE GAUGE | 1 |
| 13 | 222011 | GROUND WIRE & CLAMP | 1 | 38 | 159239 | NIPPLE | 1 |
| 14 | 156849 | NIPPLE, pipe, 3/8-18 npt | 1 | 39 | 155665 | SWIVEL | 1 |
| 15✓ | 171988 | GASKET, chlororene rubber and cork | 1 | 40 | 235339 | HOSE, fluid, nylon, cpld 3/8 npsm (fbc), 1/4" ID x 25' (6.3 mm ID x 7.6 m) | 1 |
| 16 | 110756 | ELBOW, street, 90°, 3/8 npt (mxf) | 1 | 42 | 288938 | HVLP GUN, AirPro | 1 |
| 17✓ | 208390 | BALL VALVE, 1/4-18 npt(m) See 307068 for parts | 2 | 43 | 210867 | AIR HOSE, cpld 1/4 npsm(fbc), 5/16" ID x 25' (7.9 mm ID 1 x 7.6 m) | 1 |
| 18✓ | 237533 | BALL VALVE, 3/8-18 npsm(m x f), See 307068 for parts | 1 | 44 | 103473 | WIRE TIE STRAP | 13 |
| 19 | 100139 | PLUG, pipe, headless, 1/8-27 npt | 1 | Use only Genuine Graco Parts and Accessories. | | | |
| 20 | 210575 | CAP, filler | 1 | ✓ | Keep these spare parts on hand to reduce down time. | | |
| 21▲ | 290044 | LABEL, identification | 1 | ▲ | Replacement Danger and Warning labels, tags and cards are available at no cost. | | |
| 22 | 188784 | NUT, jam, hex, 1-1/2-12-unf-2b, | 1 | | | | |
| 23▲ | 175078 | LABEL, Warning, not shown | 1 | | | | |
| 25 | 151519 | NIPPLE, reducing, 1/4-1/8 npt | 1 | | | | |
| 26 | 15D059 | PRESSURE POT LINERS, Package of 20, 5 gal. (20 liter) size, purchase separately | 1 | | | | |

Technical Data

| | US | Metric |
|---|---|----------------|
| Maximum Fluid Working Pressure | 100 psi | 0.7 MPa, 7 bar |
| Maximum Air Working Pressure | 100 psi | 0.7 MPa, 7 bar |
| Gun Air Consumption | See manual 312414 | |
| Actual Pot Capacity | 8.8 U.S. gallon | 33 liter |
| Wetted Parts | | |
| Pressure pot | 304/316 stainless steel ASME, Santoprene®, thermoplastic polyamide, and PET | |
| Spray gun | See manual 312414 | |
| Fluid hoses | nylon | |
| Fluid fittings | 304/316 stainless steel | |
| Notes | | |
| All 304, 316 and 17-4 PH stainless steel is electropolished and/or passivated. Santoprene® is a registered trademark of the Monsanto Co. | | |

Graco Standard Warranty

Graco warrants all equipment referenced in this document which is manufactured by Graco and bearing its name to be free from defects in material and workmanship on the date of sale to the original purchaser for use. With the exception of any special, extended, or limited warranty published by Graco, Graco will, for a period of twelve months from the date of sale, repair or replace any part of the equipment determined by Graco to be defective. This warranty applies only when the equipment is installed, operated and maintained in accordance with Graco's written recommendations.

This warranty does not cover, and Graco shall not be liable for general wear and tear, or any malfunction, damage or wear caused by faulty installation, misapplication, abrasion, corrosion, inadequate or improper maintenance, negligence, accident, tampering, or substitution of non-Graco component parts. Nor shall Graco be liable for malfunction, damage or wear caused by the incompatibility of Graco equipment with structures, accessories, equipment or materials not supplied by Graco, or the improper design, manufacture, installation, operation or maintenance of structures, accessories, equipment or materials not supplied by Graco.

This warranty is conditioned upon the prepaid return of the equipment claimed to be defective to an authorized Graco distributor for verification of the claimed defect. If the claimed defect is verified, Graco will repair or replace free of charge any defective parts. The equipment will be returned to the original purchaser transportation prepaid. If inspection of the equipment does not disclose any defect in material or workmanship, repairs will be made at a reasonable charge, which charges may include the costs of parts, labor, and transportation.

THIS WARRANTY IS EXCLUSIVE, AND IS IN LIEU OF ANY OTHER WARRANTIES, EXPRESS OR IMPLIED, INCLUDING BUT NOT LIMITED TO WARRANTY OF MERCHANTABILITY OR WARRANTY OF FITNESS FOR A PARTICULAR PURPOSE.

Graco's sole obligation and buyer's sole remedy for any breach of warranty shall be as set forth above. The buyer agrees that no other remedy (including, but not limited to, incidental or consequential damages for lost profits, lost sales, injury to person or property, or any other incidental or consequential loss) shall be available. Any action for breach of warranty must be brought within two (2) years of the date of sale.

GRACO MAKES NO WARRANTY, AND DISCLAIMS ALL IMPLIED WARRANTIES OF MERCHANTABILITY AND FITNESS FOR A PARTICULAR PURPOSE, IN CONNECTION WITH ACCESSORIES, EQUIPMENT, MATERIALS OR COMPONENTS SOLD BUT NOT MANUFACTURED BY GRACO. These items sold, but not manufactured by Graco (such as electric motors, switches, hose, etc.), are subject to the warranty, if any, of their manufacturer. Graco will provide purchaser with reasonable assistance in making any claim for breach of these warranties.

In no event will Graco be liable for indirect, incidental, special or consequential damages resulting from Graco supplying equipment hereunder, or the furnishing, performance, or use of any products or other goods sold hereto, whether due to a breach of contract, breach of warranty, the negligence of Graco, or otherwise.

FOR GRACO CANADA CUSTOMERS

The Parties acknowledge that they have required that the present document, as well as all documents, notices and legal proceedings entered into, given or instituted pursuant hereto or relating directly or indirectly hereto, be drawn up in English. Les parties reconnaissent avoir convenu que la rédaction du présente document sera en Anglais, ainsi que tous documents, avis et procédures judiciaires exécutés, donnés ou intentés, à la suite de ou en rapport, directement ou indirectement, avec les procédures concernées.

Graco Information

For the latest information about Graco products, visit www.graco.com.

For patent information, see www.graco.com/patents.

TO PLACE AN ORDER, contact your Graco distributor or call to identify the nearest distributor.

Phone: 612-623-6921 **or Toll Free:** 1-800-328-0211 **Fax:** 612-378-3505

All written and visual data contained in this document reflects the latest product information available at the time of publication. Graco reserves the right to make changes at any time without notice.

Original instructions. This manual contains English. MM 308455

Graco Headquarters: Minneapolis

International Offices: Belgium, China, Japan, Korea

GRACO INC. AND SUBSIDIARIES • P.O. BOX 1441 • MINNEAPOLIS MN 55440-1441 • USA

Copyright 1994, Graco Inc. All Graco manufacturing locations are registered to ISO 9001.

www.graco.com

Revision M, May 2019