

MXP3 Inlet Block Kit (ISO 4401)

313376A

Part No. 15W558

Zinc Plated Steel

3000 psi (20.7 MPa, 207 bar) Maximum Working Pressure**Important Safety Instructions**

Read all warnings and instructions in this manual and in manual 312497. Save all instructions.

Number of Sections	"A"*	"B"*	Tie Rods†
3	8.61	5.35	557766
4	9.96	6.70	557767
5	11.31	8.05	557768
6	12.66	9.39	557769
7	14.00	10.74	557770
8	15.35	12.09	557771
9	16.70	13.44	557772
10	18.05	14.79	563520

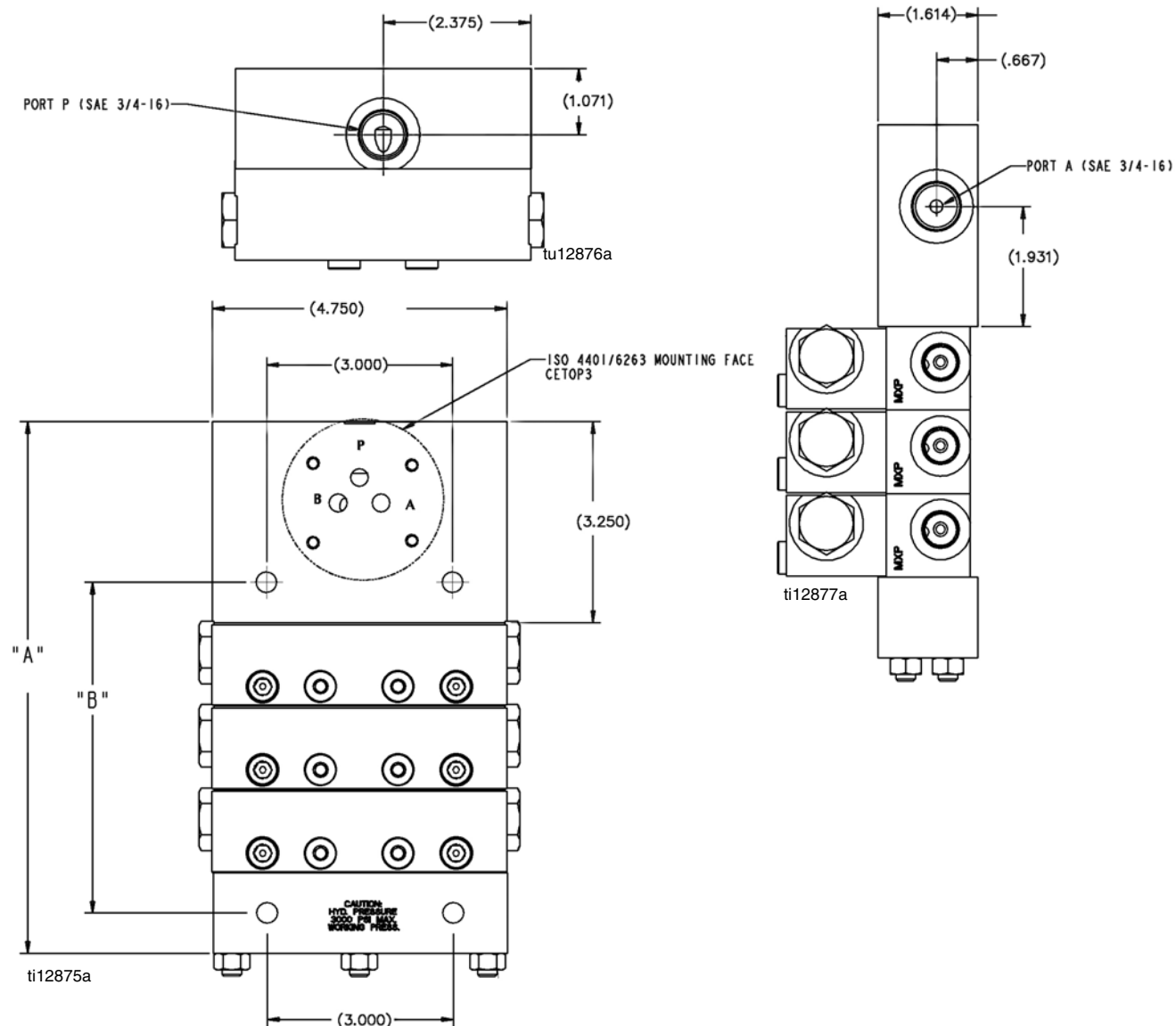
* See illustrations, page 2

† 3 Tie rods and 3 nuts are required per divider assembly. Use Tie Rod nut 555406.

Torque tie rods 6 to 9 ft.-lbs (8.1 to 12.2 N.m)

Assembly Notes

1. SAE Ports 3 / 4 - 16
2. ISO 4401 (CETOP 3) standard mounting face
3. Uses same mounting hole pattern as current inlet
4. Refer to instruction manual 312497 for additional information about MXP
5. In many flow control applications, port "A" will be the inlet with regulated flow delivered to port "B" which feeds the MXP assembly. Port "P" is not in use.
6. In shunt applications, port "P" will be the inlet with flow directed to port "A" (shunt) or to port "B" (MXP assembly)



All written and visual data contained in this document reflects the latest product information available at the time of publication.
Graco reserves the right to make changes at any time without notice.

This manual contains English. MM 313376

Graco Headquarters: Minneapolis
International Offices: Belgium, China, Japan, Korea

GRACO INC. P.O. BOX 1441 MINNEAPOLIS, MN 55440-1441

Copyright 2008, Graco Inc. is registered to I.S. EN ISO 9001

www.graco.com

10/2008