

## Express 190 Electric Airless Sprayers

334118B

EN

*For professional use only.*

*Not approved for use in explosive atmospheres or hazardous locations.*

*For portable airless spraying of architectural paints and coatings.*

3000 psi (207 bar, 20.7 MPa) Maximum Working Pressure

17A322, (120V) Express 190: North/South America

17A323, (230V) Express 190: Europe

17C526, (230V) Express 190: Asia

17C117, (230V) Express 190: South America

17C123, (230V) Express 190 w/ Jetroller: Asia



### IMPORTANT SAFETY INSTRUCTIONS

Read all warnings and instructions in this manual and related manuals.

Be familiar with the controls and the proper usage of the equipment.

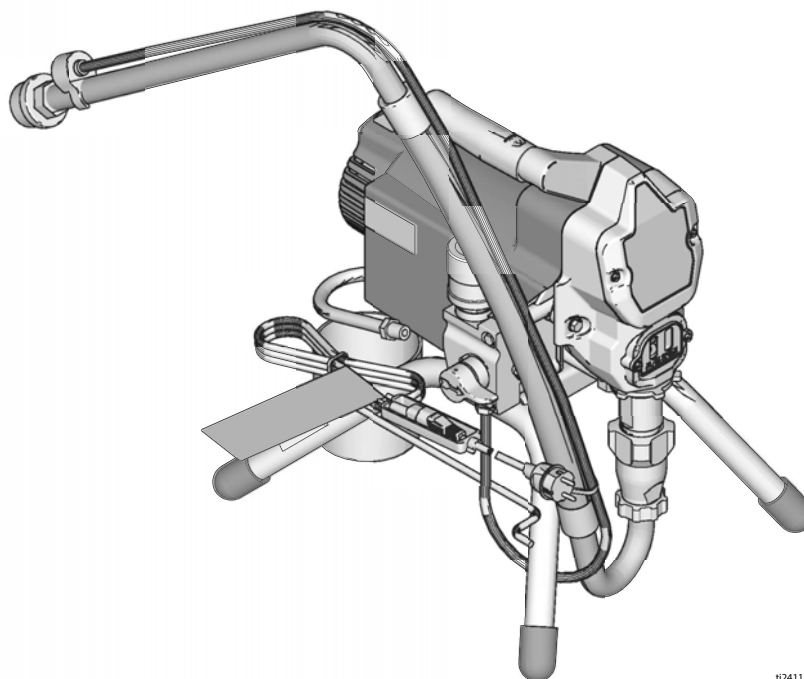
Save these instructions.

### Related Manuals:

Parts **334117**

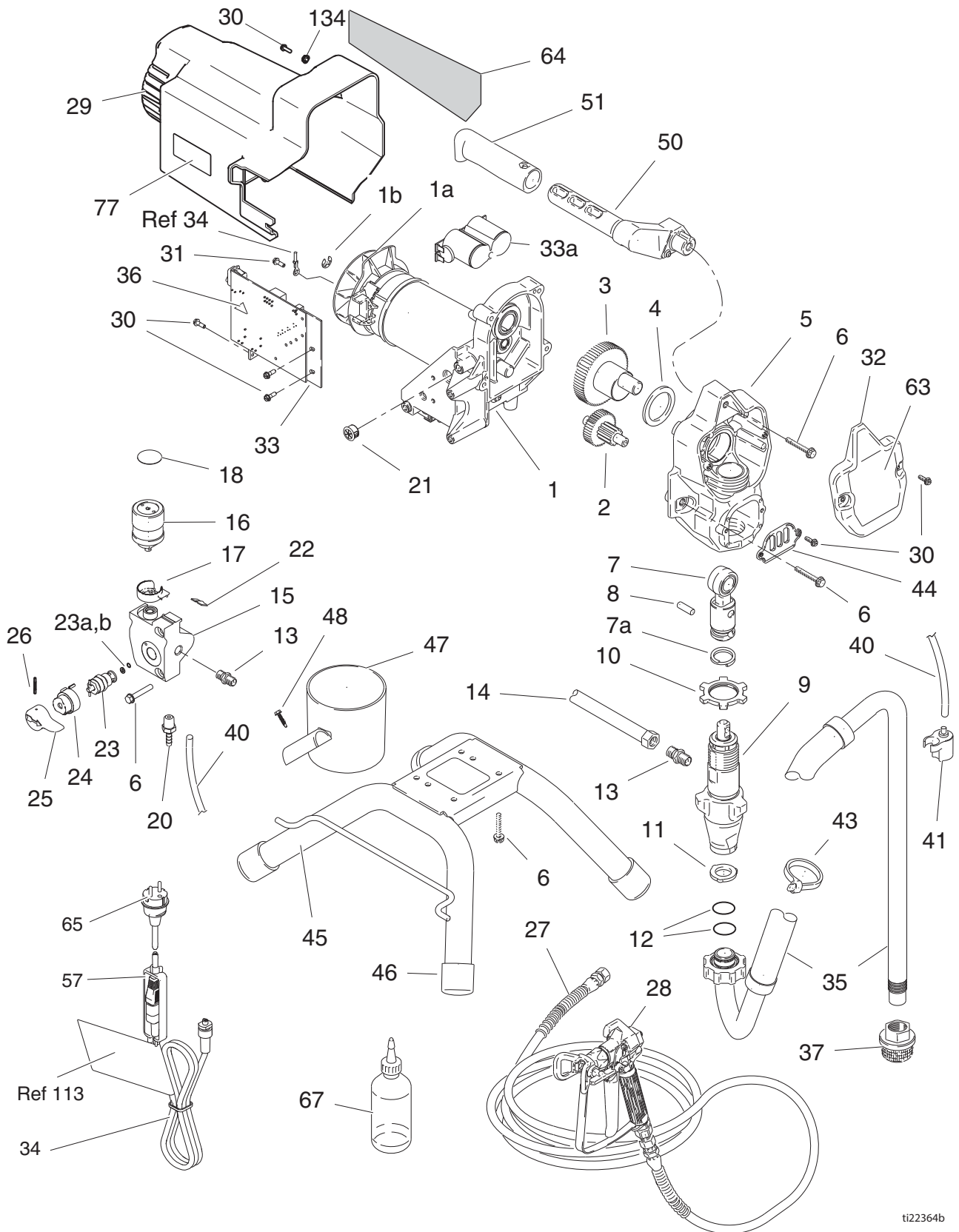
Gun **312830**

Pump **309250**



t124115a

# Parts



ti22364b

# Parts List

Ref.	Part	Description	Qty.	Ref.	Part	Description	Qty.
1		MOTOR, electric (includes 1a, 1b)		34		CORD, power	1
	17C794	120V Model, 17A322	1		253369	Model 17A323	
	249041	230V Model 17A323, 17C117, 17C123, 17C526			15J743	Model 17A322	
					253373	Model 17C117, 17C123, 17C526	
1a	249043	FAN, motor (includes 1b)	1	35	246386	HOSE, suction set	1
1b	119653	RING, retaining	1			(includes 10, 11, 12, 37)	
2	249194	GEAR, reducer	1	36▲	189930	LABEL, caution	1
3	287054	GEAR, crankshaft (includes 4)	1	37	246385	STRAINER, 7/8-14 unf	1
4	180131	BEARING, thrust	1	40	249051	KIT, tube, drain	1
5	257465	HOUSING, drive (includes 6, 30, 44)	1			(includes 20, 41, 43)	
6	117493	SCREW, mach, hex washer hd	11	41	244035	DEFLECTOR, barbed	1
7	287053	ROD, connecting (includes 8)	1	43	114958	STRAP, tie	1
7a	196750	SPRING, retaining	1	44	15B589	COVER, pump rod	1
8	196762	PIN, straight	1	45	15E823	FRAME, stand mount	1
9	246428	PUMP, displacement (includes 13)	1	46	15G857	CAP, leg	4
10	195150	NUT, jam, pump	1	47	287903	CUP, suction/drain	1
11	115099	WASHER	1	48	122667	SCREW, drill, hex washer head	1
12	117559	O-RING	2	50	287072	HANDLE (includes 6, 51)	1
13	162453	FITTING, (1/4 npsm x 1/4 npt)	2	51	116139	GRIP, handle	1
14	287003	HOSE, cpld	1	57	195551	RETAINER, plug, adapter (Model 17C117, 17C123, 17C526)	1
15	15E295	MANIFOLD, control, pressure	1				
16		CONTROL, pressure (includes 17, 18, 21, 22)		63	17B217	LABEL, front	1
				64	17B218	LABEL, side	1
	249005	120V Model, 17A322	1	65	242001	CORD SET, adapter, CEE7/7 (Model 17C117, 17C123, 17C526)	1
	248929	230V Model 17A323, 17C117, 17C123, 17C526	1	66▲	222385	TAG, warning (not shown)	1
17	15E794	CAP, wire, control, pressure	1	67	206994	FLUID, TSL, 8 oz	1
18	15A464	LABEL, control	1	77▲		LABEL, warning	1
20	M70809	FITTING, barbed	1		16G596	Model 17C323	
21	115756	BUSHING	1		195793	Model 17A322	
22	119723	TAPE, foam	1		195792	Model 17C123, 17C526	
23	235014	VALVE, drain (includes 23a, 23b, 26)	1		17C136	Model 17C117	
23a	277364	GASKET, seat	1	90	242005	CORD SET, adapter, Australia (Model 17C123, 17C526) not shown	1
23b	15E022	SEAT, valve	1				
24	224807	BASE, valve	1	94	15Y118	LABEL, made in USA	1
25	187625	HANDLE, valve, drain	1	113▲		LABEL, warning	1
26	111600	PIN, grooved	1		15K359	Model 17A322	
27	247339	HOSE, coupled, 1/4 in. x 25 ft	1		15H087	Model 17C123, 17C526	
28		GUN, SG3-E			17C135	Model 17C117	
	243012	Models, 17A322, 17C117	1	134	16Y318	WASHER, flat	2
	249498	Model 17A323	1	135▲	17A134	TAG, warning (EMG, CHI, KOR) not shown	1
	16X214	Model 17C123, 17C526	1				
29	15E341	SHIELD, motor	1	136	287121	CORD SET, South America (Model 17C117)	1
30	117501	SCREW, mach, slot hex wash hd	9		249042	KIT, brush, motor, replacement	
31	115498	SCREW, mach, slot hex wash hd	1		‡ Fuse Replacement		
32	15E630	COVER, front	1		119277	120V Model, 17A322	
33‡		BOARD, control (includes 36)	1		119688	230V Model 17A323, 17C117, 17C123, 17C526	
	249052	120V Model, 17A322	1				
	16X295	230V Model 17A323, 17C117, 17C123, 17C526 (includes 33a)	1				
33a	24R905	CAPACITOR BOARD, 230V (Model 17A323, 17C117, 17C123, 17C526)	1				

▲ Replacement Danger and Warning labels, tags, and cards are available at no cost.

# Graco Standard Warranty

Graco warrants all equipment referenced in this document which is manufactured by Graco and bearing its name to be free from defects in material and workmanship on the date of sale to the original purchaser for use. With the exception of any special, extended, or limited warranty published by Graco, Graco will, for a period of twelve months from the date of sale, repair or replace any part of the equipment determined by Graco to be defective. This warranty applies only when the equipment is installed, operated and maintained in accordance with Graco's written recommendations.

This warranty does not cover, and Graco shall not be liable for general wear and tear, or any malfunction, damage or wear caused by faulty installation, misapplication, abrasion, corrosion, inadequate or improper maintenance, negligence, accident, tampering, or substitution of non-Graco component parts. Nor shall Graco be liable for malfunction, damage or wear caused by the incompatibility of Graco equipment with structures, accessories, equipment or materials not supplied by Graco, or the improper design, manufacture, installation, operation or maintenance of structures, accessories, equipment or materials not supplied by Graco.

This warranty is conditioned upon the prepaid return of the equipment claimed to be defective to an authorized Graco distributor for verification of the claimed defect. If the claimed defect is verified, Graco will repair or replace free of charge any defective parts. The equipment will be returned to the original purchaser transportation prepaid. If inspection of the equipment does not disclose any defect in material or workmanship, repairs will be made at a reasonable charge, which charges may include the costs of parts, labor, and transportation.

**THIS WARRANTY IS EXCLUSIVE, AND IS IN LIEU OF ANY OTHER WARRANTIES, EXPRESS OR IMPLIED, INCLUDING BUT NOT LIMITED TO WARRANTY OF MERCHANTABILITY OR WARRANTY OF FITNESS FOR A PARTICULAR PURPOSE.**

Graco's sole obligation and buyer's sole remedy for any breach of warranty shall be as set forth above. The buyer agrees that no other remedy (including, but not limited to, incidental or consequential damages for lost profits, lost sales, injury to person or property, or any other incidental or consequential loss) shall be available. Any action for breach of warranty must be brought within two (2) years of the date of sale.

**GRACO MAKES NO WARRANTY, AND DISCLAIMS ALL IMPLIED WARRANTIES OF MERCHANTABILITY AND FITNESS FOR A PARTICULAR PURPOSE, IN CONNECTION WITH ACCESSORIES, EQUIPMENT, MATERIALS OR COMPONENTS SOLD BUT NOT MANUFACTURED BY GRACO.** These items sold, but not manufactured by Graco (such as electric motors, switches, hose, etc.), are subject to the warranty, if any, of their manufacturer. Graco will provide purchaser with reasonable assistance in making any claim for breach of these warranties.

In no event will Graco be liable for indirect, incidental, special or consequential damages resulting from Graco supplying equipment hereunder, or the furnishing, performance, or use of any products or other goods sold hereto, whether due to a breach of contract, breach of warranty, the negligence of Graco, or otherwise.

## **FOR GRACO CANADA CUSTOMERS**

The Parties acknowledge that they have required that the present document, as well as all documents, notices and legal proceedings entered into, given or instituted pursuant hereto or relating directly or indirectly hereto, be drawn up in English. Les parties reconnaissent avoir convenu que la rédaction du présent document sera en Anglais, ainsi que tous documents, avis et procédures judiciaires exécutés, donnés ou intentés, à la suite de ou en rapport, directement ou indirectement, avec les procédures concernées.

# Graco Information

For the latest information about Graco products, visit [www.graco.com](http://www.graco.com).

For patent information, see [www.graco.com/patents](http://www.graco.com/patents).

**TO PLACE AN ORDER**, contact your Graco distributor or call 1-800-690-2894 to identify the nearest distributor.

*All written and visual data contained in this document reflects the latest product information available at the time of publication.  
Graco reserves the right to make changes at any time without notice.*

*This manual contains English. MM 334118*

**Graco Headquarters:** Minneapolis  
**International Offices:** Belgium, China, Japan, Korea

**GRACO INC. AND SUBSIDIARIES • P.O. BOX 1441 • MINNEAPOLIS MN 55440-1441 • USA**  
**Copyright 2014, Graco Inc. All Graco manufacturing locations are registered to ISO 9001.**

[www.graco.com](http://www.graco.com)  
Revision B, May 2017