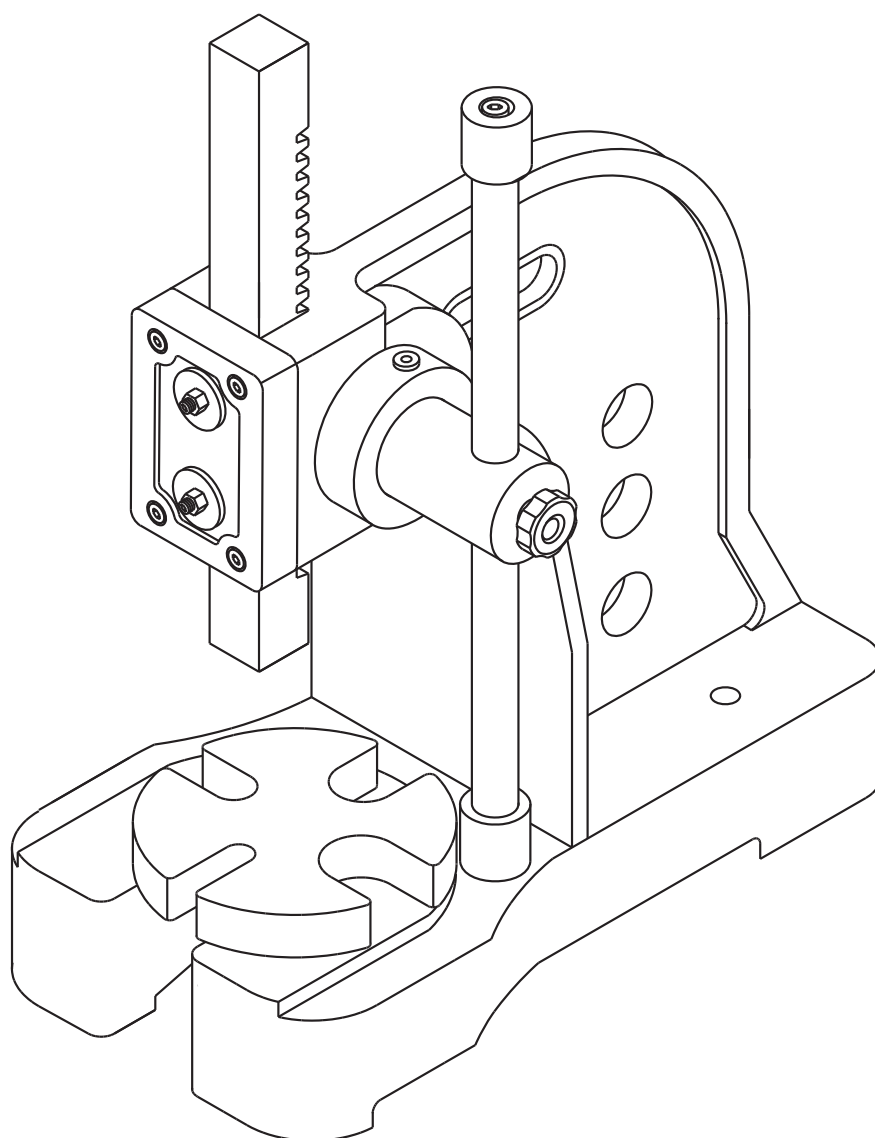


OPERATING MANUAL & PARTS LIST

**9661052, 9661103, 9661202,
9661303, 9661402 & 9661501**

PALMGREN®

0.5-TON, 1-TON, 2-TON, 3-TON, 4-TON & 5-TON ARBOR PRESSES



Read carefully and follow all safety rules and operating instructions before first use of this product.

DESCRIPTION

Palmgren Arbor Presses are designed for riveting, squeezing, bending, punching, flattening, removing a bearing or pressing in bearings. Removable, rotating, machined anvil has 4-slots to provide convenient support for workpieces that vary in size and shape. Presses are suited for work in production lines as well as in machine shops, automotive repair shops and home workshops. Model 9661052 is a 0.5-ton press, 9661103 is a 1-ton press, 9661202 is a 2-ton press, 9661303 is a 3-ton press, 9661402 is a 4-ton press and 9661501 is a 5-ton press.

SAFETY RULES

- For best operation, the arbor press must be bolted to a stationary object that is also affixed to the floor.
- When using the press, be sure the work is mounted securely in it. Do not attempt to use the press with the workpiece mounted on an angle.
- Use only accessories designed for the arbor press. Attachments and equipment used in the pressing operation must be as strong as the press. Use steel collars and blocks to press against the workpiece.
- Do not overload the press by using handle extensions (cheater bars).
- When not in use, the ram should be in the down position to prevent accidents.
- Know the arbor press and accessories. Read and understand owner's manual.
- Wear a face shield or safety glasses.

- Never place hands in jeopardy.
- Always check your set up, i.e., see that the ram contacts workpiece squarely before applying pressure.
- Keep your mind on your work. Be alert.
- Make sure workpiece, punch, anvil and accessories are securely clamped.
- Don't force the arbor press or its accessories.

ASSEMBLY

Refer to Figure 2.

- Mount arbor press to bench or stand. Secure arbor press using two mounting holes on the body (hardware is not supplied).
- The 0.5, 1 and 2-Ton presses are completely assembled. The handle needs to be installed on the 3, 4 and 5-Ton presses.
To install handle: Remove cap and bolt from handle (Ref. Nos. 12, 13 and 10). Insert handle into pinion (Ref. No. 9) and replace cap and bolt. Secure handle in position with knob (Ref. No. 11).
- To use with a punch: Remove pinion retaining ring and set screw (Ref. Nos. 7 and 14) from pinion. Remove pinion from the body. Remove ram (Ref. No. 8), mount ram upside down so the punch hole is facing down. Replace pinion, pinion retaining ring and set screw. Insert the punch best suited to the job. Magnet inside ram will secure punch in position. Set screws (Ref. No. 4) will ease or restrict the ram action. Adjust to your requirements.

MAINTENANCE

- Oil the pinion periodically through the oil fitting, and grease the ram rack whenever necessary. Keep a light film of oil on machined surface to prevent rust. Keep work area clean. Clean the arbor press of dirt and debris after every use.
- If the ram is loose and drops by itself, loosen hex nuts and tighten screws (Ref. Nos. 5 and 4) for adjustment. All screws should be tightened with the same amount of pressure. Secure set screws by tightening nuts.

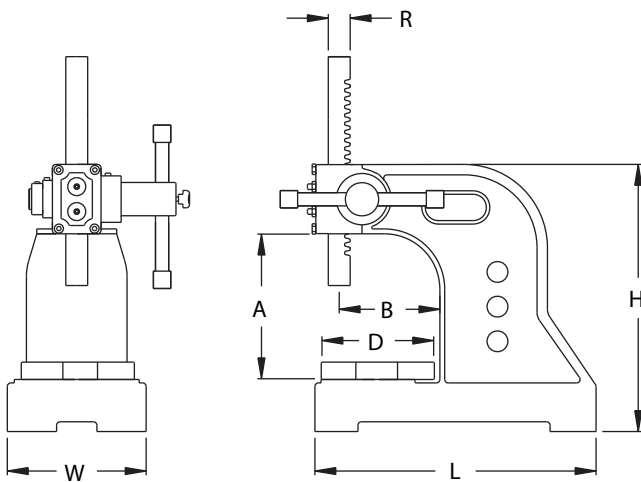


Figure 1 - Dimensions

		Dimension Specifications					
Model Size		0.5-Ton	1-Ton	2-Ton	3-Ton	4-Ton	5-Ton
Model Number		9661052	9661103	9661202	9661303	9661402	9661501
Base Length	L	8.0"	9.65"	14"	16"	20"	24.5"
Base Width	W	4"	5"	7"	7.5"	10"	11"
Height	H	8"	10"	12"	18"	24"	31"
Max. Work Height	A	4"	5"	6.5"	11"	14"	17.5"
Swing	2B	6.5"	8"	10"	11.50"	16.5"	18.50"
Anvil Diameter	D	3.25"	4.25"	6.5"	6.5"	10"	10.5"
Ram Dimension	R x R	3/4" x 3/4"	7/8" x 7/8"	1" x 1"	1.25" x 1.25"	1.5" x 1.5"	2" x 2"
Ram Punch Hole		3/8"	3/8"	1/2"	1/2"	1/2"	1/2"

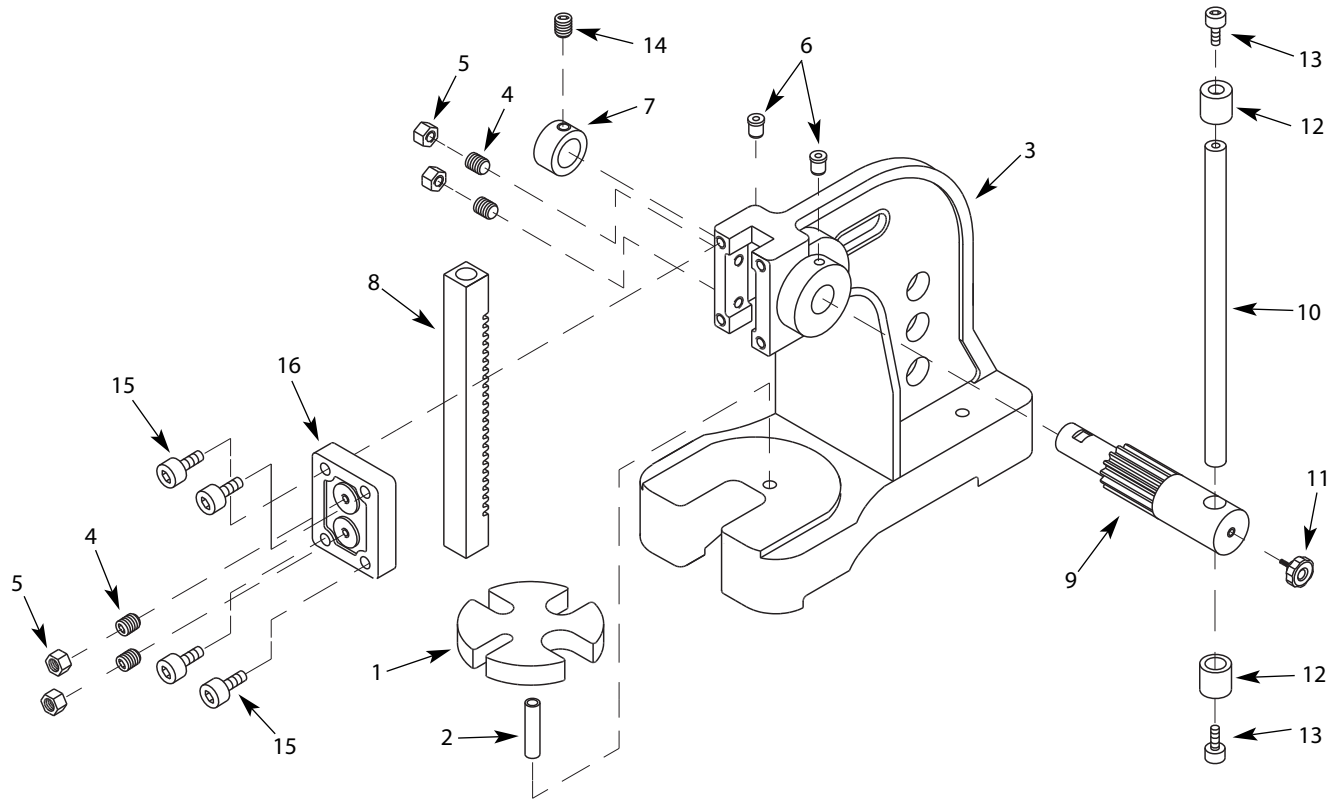


Figure 2 – Replacement parts illustration for arbor presses.

REPLACEMENT PARTS LIST FOR ARBOR PRESSES

Ref. No.	Description	Part Number for:						Qty.
		9661052	9661103	9661202	9661303	9661402	9661501	
1	Anvil	9628709.00	9628808.00	9628720.00	9628733.00	9628741.00	9645949.01	1
2	Pin, 6x20mm	9628708.00	9628708.00	9628708.00	9628708.00	9628708.00	9628708.00	1
3	Body	N/A	N/A	N/A	N/A	N/A	N/A	1
4	Set Screw 6-1.0x30mm	*	*	*	-	-	-	4
4	Set Screw 8-1.25x30mm	-	-	-	*	*	-	4
4	Set Screw 10-1.5x45mm	-	-	-	-	-	*	4
5	Hex nut 6-1.0mm	*	*	*	-	-	-	4
5	Hex nut 8-1.25mm	-	-	-	*	*	-	4
5	Hex nut 10mm	-	-	-	-	-	*	4
6	6mm Oil Fitting	*	*	*	*	*	*	2
7	Pinion Retaining Ring	9628707.01	9645947.01	9628719.01	9628732.01	9628732.01	9645948.01	1
8	Ram w/Magnet	9628701.00	9644180.01	9644181.01	9644182.01	9644183.01	9644184.01	1
9	Pinion	9644185.01	9644186.01	9644187.01	9644188.01	9644189.01	9644190.01	1
10	Handle	9628705.00	9628807.00	9628718.00	9628731.00	9628740.00	9611491.01	1
11	Knob	9628704.00	9628806.00	9628717.00	962830.00	9628730.00	9628730.00	1
12	Cap	9628703.00	9628805.00	9628716.00	9628729.00	9628729.00	9644192.01	2
13	Socket Head Bolt M5x12	*	*	*	-	-	-	2
13	Socket Head Bolt 6-1.0x16mm	-	-	-	*	*	*	2
14	M8-1.25x10 Head screw	*	*	*	-	-	-	1
14	M10-1.5x10 Head screw	-	-	-	*	*	*	1
15	Hex head bolt 6-1.0x25mm	*	*	*	-	-	-	4
15	Hex head bolt M8-1.25x35	-	-	-	*	-	-	4
15	Hex head bolt M10-1.5x35	-	-	-	-	*	-	4
15	Hex head bolt M10-1.5x40mm	-	-	-	-	-	*	4
16	Face Plate	9628710.00	9628710.00	9628809.00	9628721.00	9628734.00	9644193.01	1
Δ	Owner's Manual	9644195.01	9644195.01	9644195.01	9644195.01	9644195.01	9644195.01	

(Δ) Not shown. (N/A) Not available as repair part. (*) Standard hardware item, available locally.

PALMGREN WARRANTY

C.H. Hanson / Palmgren warrants their products to be free of defects in material or workmanship. This warranty does not cover defects due directly or indirectly to misuse, abuse, normal wear and tear, failure to properly maintain the product, heated, ground or otherwise altered, or used for a purpose other than that for which it was intended.

The warranty does not cover expendable and/or wear part (i.e. v-belts, screws, abrasives, jaws), damage to tools arising from alteration, abuse or use other than their intended purpose, packing and freight. The duration of this warranty is expressly limited to the terms noted below beginning from the date of delivery to the original user.

The Palmgren branded items carry the following warranties on parts:

All vises, clamps, positioning tables, tombstones, jack screws and vise accessories - LIFETIME.

All bench grinders, drill presses, tapping machines, band saws, lathes, milling machines, arbor presses, abrasive finishing machines and work stands - 3 YEARS.

The obligation of C.H. Hanson / Palmgren is limited solely to the repair or replacement, at our option, at its factory or authorized repair agent of any part that should prove inoperable. Purchaser must lubricate and maintain the product under normal operating conditions at all times. Prior to operation become familiar with product and the included materials, i.e. warnings, cautions and manuals.

Failure to follow these instructions will void the warranty.

This warranty is the purchaser's exclusive remedy against C.H. Hanson for any inoperable parts in its product. Under no circumstances is C.H. Hanson liable for any direct, indirect, incidental, special or consequential damages including loss of profits in any way related to the use or inability to use our products. This warranty gives you specific legal rights which may vary from state to state.

PALMGREN®

Palmgren - a C.H. Hanson Company
2000 N. Aurora Rd., Naperville, IL 60563 U.S.A.
or call 1-800-827-3398